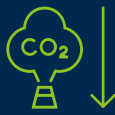




### Biogas Captured

4.5 million m<sup>3</sup>



### Carbon Abatement

89 thousand tonnes  
(t CO<sub>2</sub>e - environmental benefit)



### Seedlings Planted

1.4 million seedlings  
planted for 10 years



### Cars off the road

11,915 (for the last  
12 months of carbon  
abatement)

## Tackling Odour and Emissions at Tumut Landfill

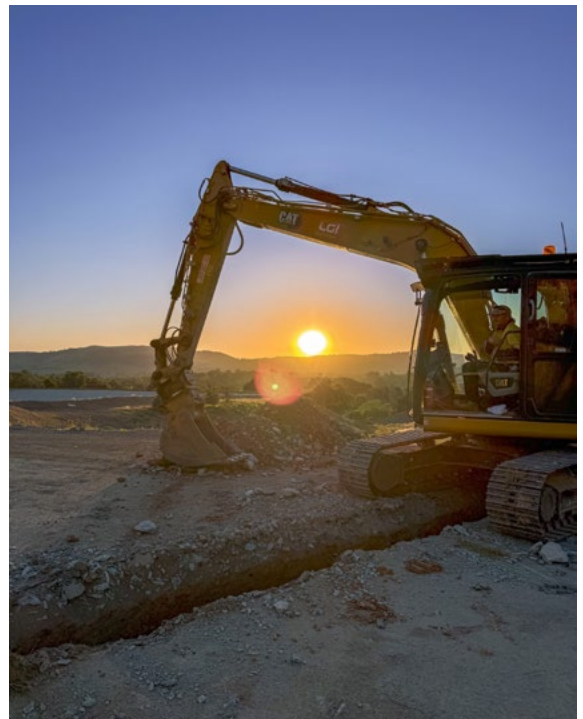
As of February 2026

### Delivering real results for the environment and the local community

The Tumut Landfill Biogas Project is a proactive collaboration between LGI and Bellettes Bulk Bins, a long-standing local waste operator serving the region for over 20 years. The partnership demonstrates how privately operated regional landfills can take voluntary action to reduce harmful emissions and address environmental concerns.

In 2024, LGI installed a bespoke biogas management system, including an LGI 500 series CER-compliant flare and supporting infrastructure. These upgrades enable the safe, continuous capture and combustion of methane gas, helping to reduce odours, improve air quality, and generate carbon credits through the Emissions Reduction Fund.

This project provides measurable climate benefits while responding to community concerns about landfill odours. Future flare and infrastructure upgrades are already planned to increase gas capture capacity and strengthen the site's long-term environmental performance.





## A Local Partnership Driving Real Change

Bellettes Bulk Bins and LGI have collaborated to bring advanced methane capture technology to this privately operated regional site.

LGI continues to manage the system end-to-end, including design, installation, reporting, and maintenance, to ensure safe and efficient performance aligned with ERF standards.

The system provides:

- ✓ Capture of landfill gas with measurable carbon abatement
- ✓ Reduction in odour and airborne pollutants
- ✓ ACCU revenue from a commercially viable model
- ✓ Future-proofed infrastructure with planned flare and well upgrades
- ✓ Improved air quality for nearby residents
- ✓ Voluntary emissions reductions beyond the regulatory baseline

With LGI's continued support, Tumut's biogas system will be further expanded to improve gas capture and reduce odour impacts. Planned upgrades include a higher-capacity flare and additional gas wells, helping to future-proof the site. This partnership represents a practical, scalable model for how private operators can lead on climate action and community wellbeing, even in regional areas.

---

07 3711 2225  
enquiries@lgi.com.au  
[www.lgi.com.au](http://www.lgi.com.au)

